

Going Global Partnerships

# Q&A Session: UK-Brazil Grant Calls

18 August 2025

# Agenda

- Welcome and introductions
- Insights on TNE and UK-Brazil collaborations
- TNE Exploratory Grants 2025-26
- Research Environments 2025-26 Collaboration grants
- Q&A



# Safeguarding

Safeguarding represents our commitment to creating a safe environment where no child or adult will experience harm, abuse or exploitation during their contact with us.

The British Council promotes a **zero-tolerance inaction approach** to safeguarding. In practice, this means that all necessary efforts must be made to comply with the Policy, irrespective of cost implications or operational inconvenience



# Reporting concerns

If you need to report any situation that puts your safety or the safety of others at risk, scan the code next to this text.



# Insights on TNE and UK-Brazil collaboration networks



# Going Global Partnerships Programme

**Going Global Partnerships** supports universities, colleges and wider education stakeholders around the world to work together towards stronger, equitable, more inclusive and internationally connected higher education, science and TVET.

## Five core areas:

- Enabling research
- Internationalising HE and TVET
- Strengthening systems and institutions
- Enhancing learner outcomes
- Increasing equality, diversity and inclusion

# Our work in Higher Education in Brazil



## INTERNATIONALISATION

Co-creation and co-designing of programmes and projects, reflecting in arrangements



## RESEARCH COLLABORATION

Increasing joint research and research collaborations



## WOMEN IN SCIENCE

Capacity Building, fostered networks and systems for a more diverse and representative ecosystem of science, education and research

**EDI is a cross-cutting component embedded in all forms of collaboration**





Scholarships for  
Women in STEM

**For more female  
scientists, engineers,  
mathematicians and  
programmers in  
the future.**



**#WomenInStem**

**#StemHasNoLimits**



BRITISH COUNCIL

Mulheres na Ciência

## Marco Referencial para a Igualdade de Gênero

em Instituições de Ensino  
Superior no Brasil



# Transnational education global strategy

## UK TNE at the forefront



**228**  
countries and  
territories

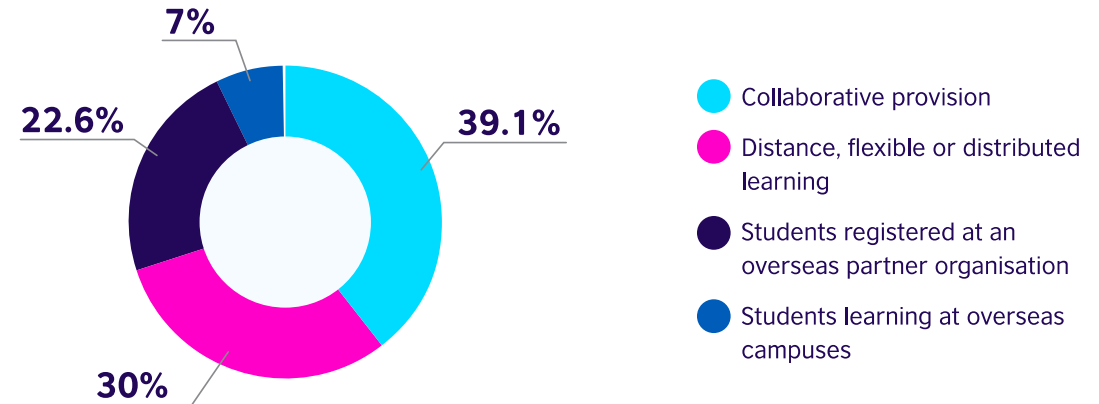


**510,835**  
TNE students



**12.7%**  
increase, record growth in  
2020-2021, compared to  
2019-2020

## Study models



**Source:** The scale of UK higher education transnational education 2020-21, Universities UK International (UUKi) and the British Council.

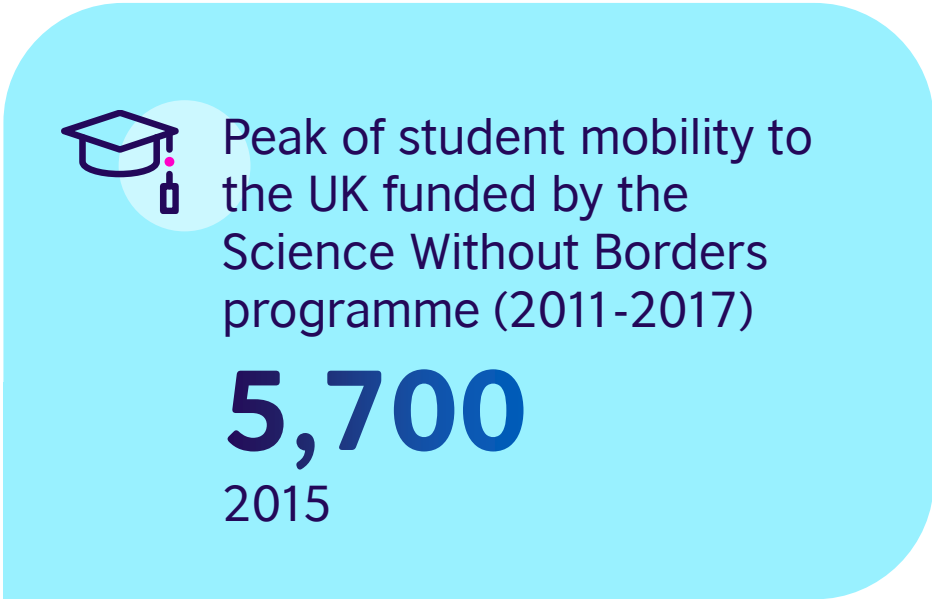


# Engagement with the UK

## International student mobility – Brazil

Destination	BR students	Market share
Arg	20,515	23%
USA	16,086	18%
UK	1,627	2%

Source: UNESCO



Source: British Council and Education Insight, 2023

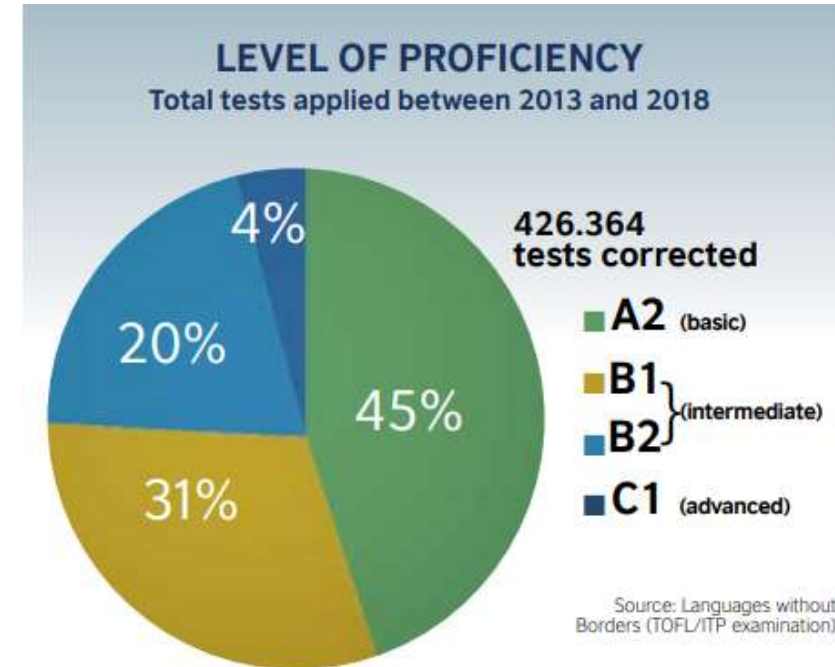
# TNE as an opportunity to improve English language

- Progress in English language skills
- Increased employability
- Upskilling faculty skills



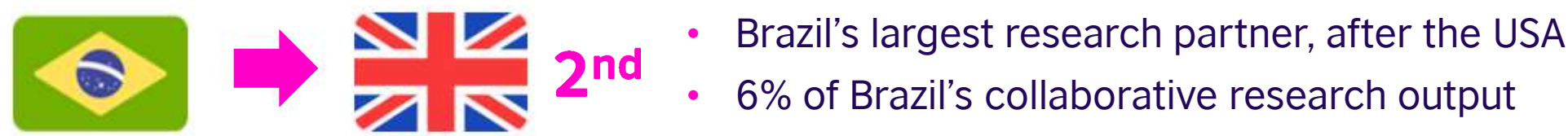
Courses delivered through  
**English as a medium of  
instruction (EMI)**

**1,000+ courses**  
in 2018 (first semester)



# Engagement with the UK

## International research collaborations



	Publication volume (2021)	% of publications via international collaboration	Top co-author country (rank and % of total collaborative output)
Brazil	102,325	35.5	1. USA: 14% 2. UK: 6% 3. Spain: 4.7% 4. Germany: 4.7% 5. France: 4.4%

Source: Analysis of Scival/Scopus data, Elsevier, 2023.

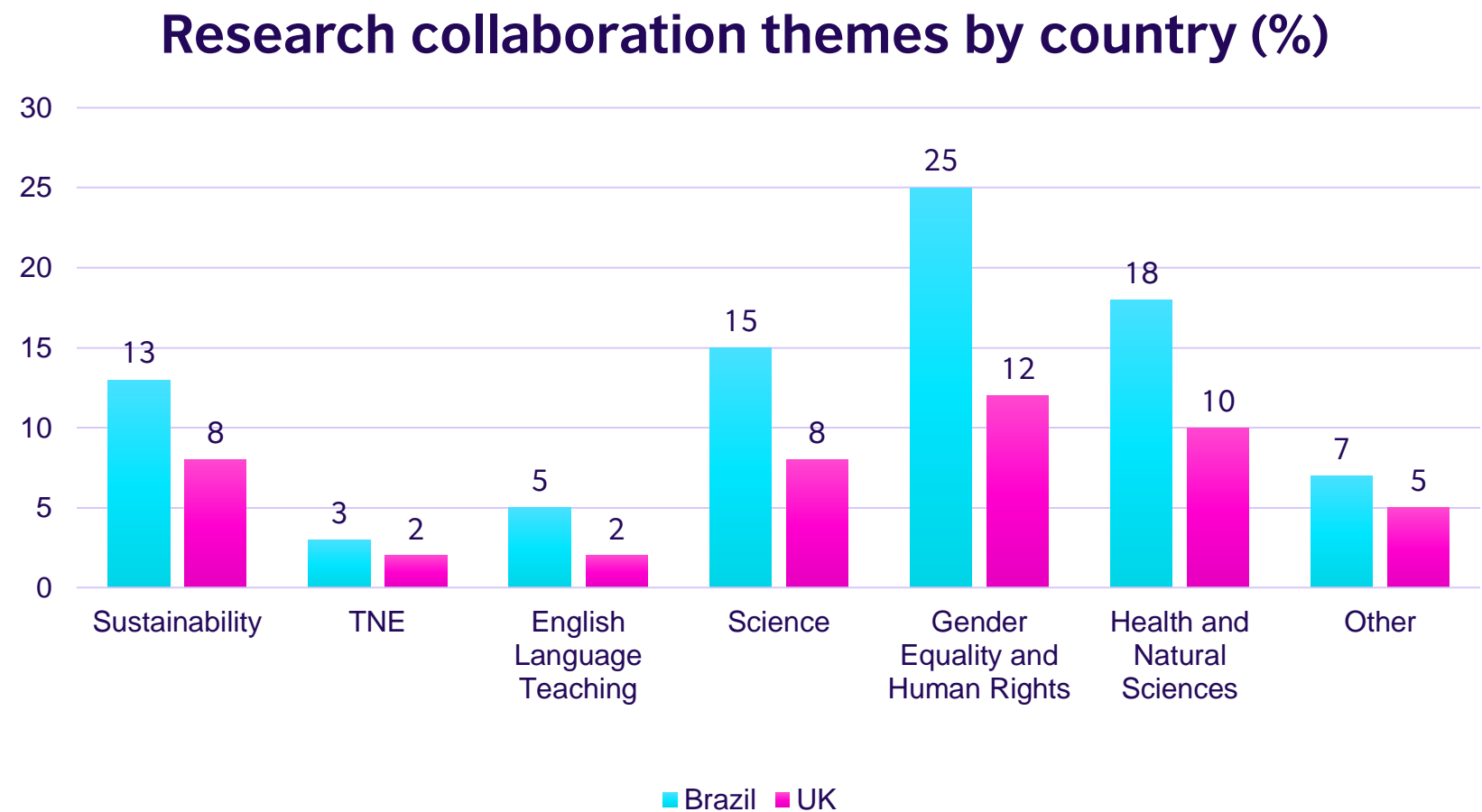
# Internationalisation and TNE in Brazil

## Priorities for HEIs in Brazil



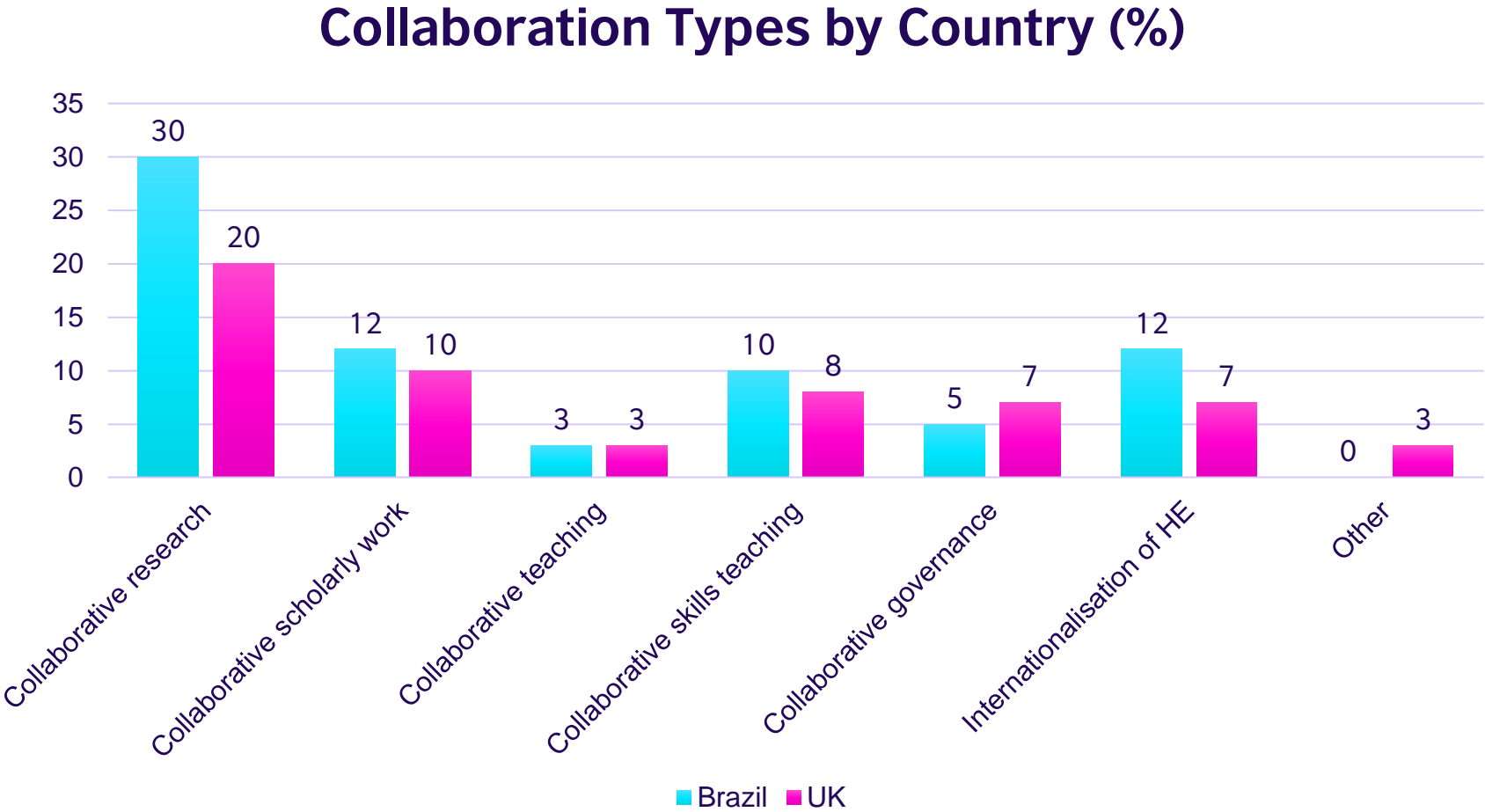
Source: [Brief report – Globalising Higher Education: TNE Models and Regulatory Insights in Latin America](#), British Council. 2024.

# UK-Brazil research collaboration themes

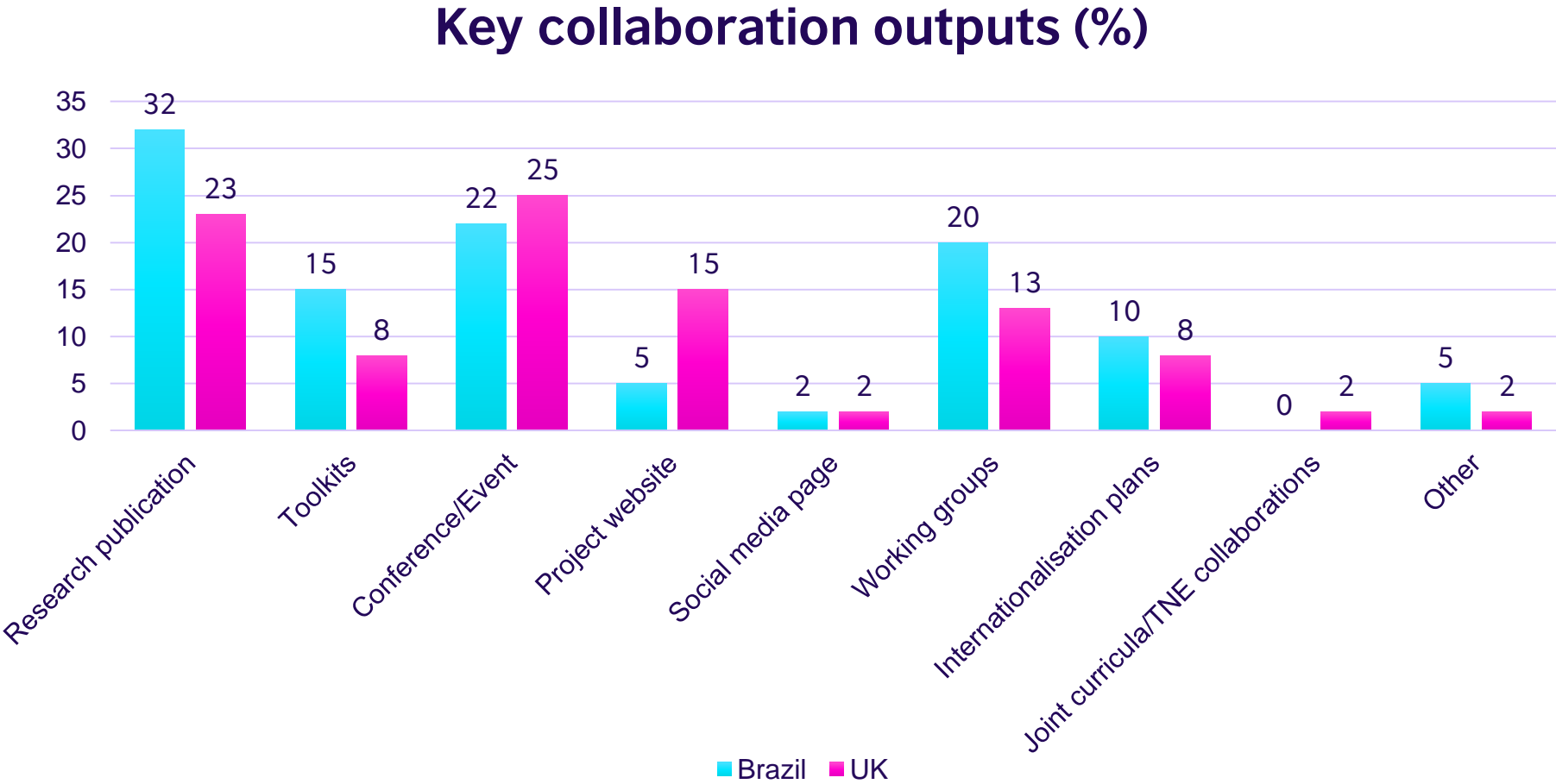




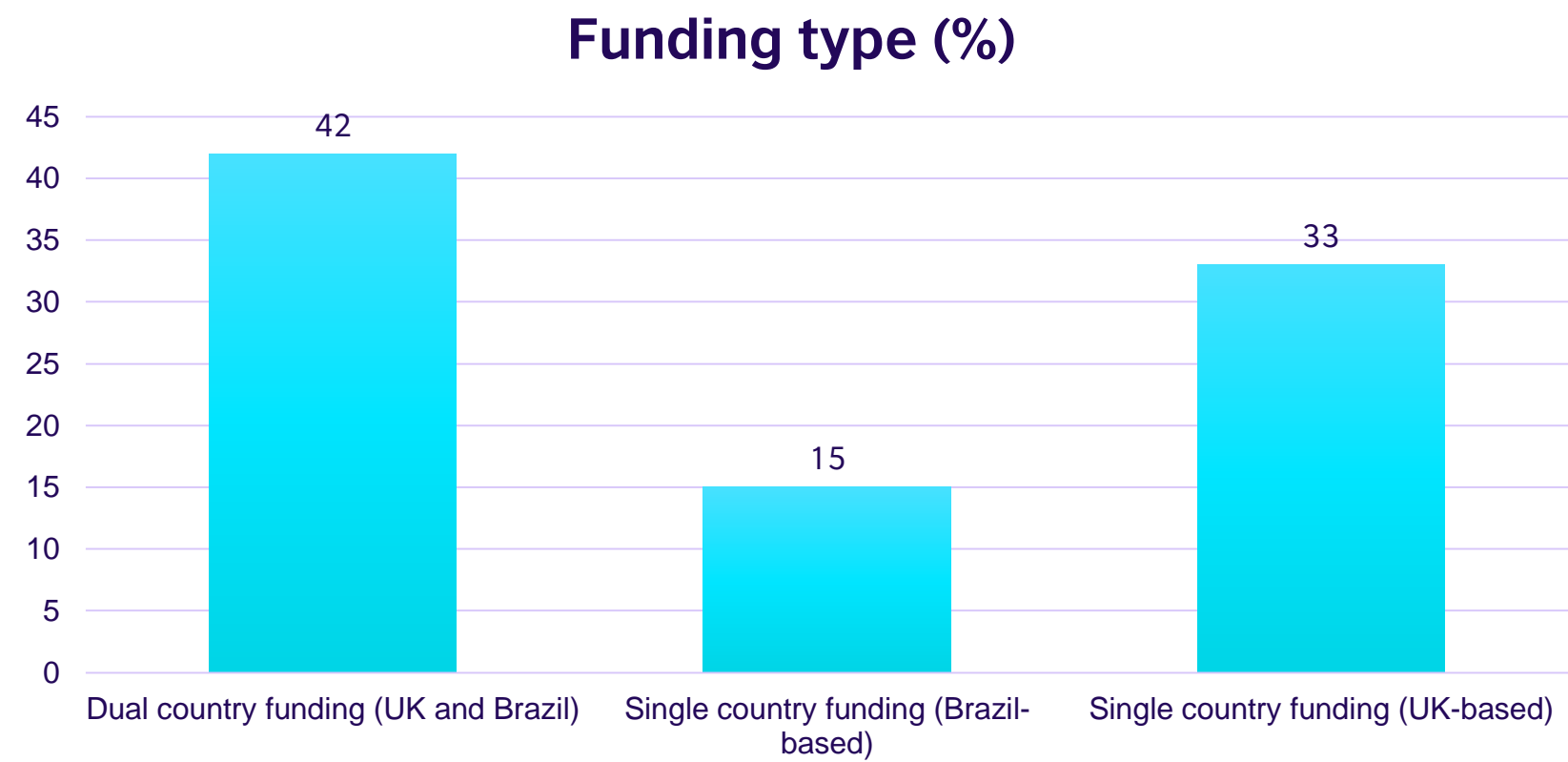
# UK-Brazil collaboration types



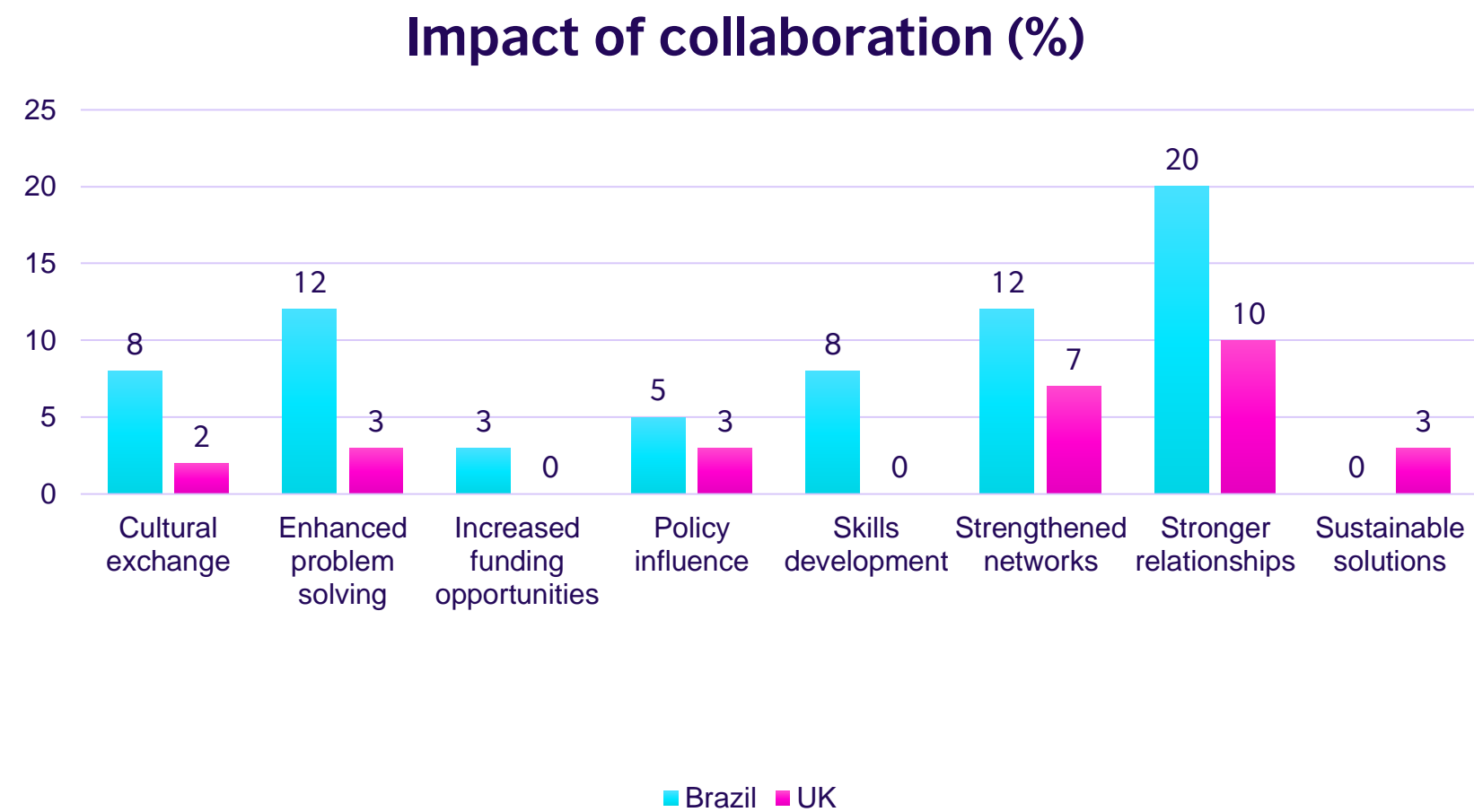
# Key collaboration outputs



# Funding type



# Impact of collaboration



# CAPES Global.edu



# CAPES Global.edu



The **CAPES-Global.Edu** programme aims to **foster the creation of cooperation networks among national institutions**, at different stages of internationalisation, with the **objective of promoting**, through international collaboration, **the development of strategic research and graduate education activities** among participating institutions.



- Build networks of Brazilian HEI aiming at the internationalisation of its members.
- HEIs should be from different country regions and with different experiences in internationalisation of HE
- Proposals should adhere to international and national public policies associated with sustainable development
- The proposals should present international partners world-wide, including HE institutions from LA+C, Africa, Asia
- The programme is planned for 5 years with 4 years of funding (R\$ 350 million per year)

# CAPES Global.edu



- Call launch and applications opened: 21 July 2025
- Applications close: 30 October 2025 (17.30 GMT-3)
- Assessment: 06 December 2025 – 21 January 2026
- Results published: 22 January – 23 February 2026
- Grant payments: March – May 2026
- Projects start: June 2026

[Information on CAPES Global.edu](#)

Contact: [capesglobal.edu@capes.gov.br](mailto:capesglobal.edu@capes.gov.br)

# TNE Exploratory Grants 2025-26

Marcela Gobo

# TNE Exploratory Grants 2025-26



This is an exploratory grant for institutional partnerships focused on TNE



## **Primary purpose of the call:**



to support university-to-university initiatives which will advance the quality of and/or widen access to UK tertiary education/ qualifications being delivered outside the UK



These are not grants for research projects



# TNE Exploratory Grants

## Institutional partnerships:

UK-Brazil institutions will work together to progress or accelerate the internationalisation of the higher education sector.

- Foster collaborations between the UK and Brazil.
- Support higher education institutions to become more international and raise their quality education in a more inclusive way.

# Objectives

Create an enabling environment for TNE in Brazil and promote the quality of UK TNE internationally

Contribute to a better understanding of the local context and facilitate a regulatory and operational environment to best support TNE Partnerships

Support TNE to contribute to the transformation of local education systems and contribute to the SDGs

# Partnership structure and eligibility criteria

## Institutional partnerships:

- One lead institution from the UK
- One lead institution from Brazil
- UK institutions must be a HE providers with degree awarding powers
- Brazilian institutions must be not-for-profit HE providers (public or private), and/or not-for-profit research institutions.

**Brazilian TVET and FE institutions are NOT eligible.**

# Application process

## The proposal must be:

- Started by the UK Lead institution on the Good Grants online platform:
- <https://goingglobalpartnerships.grantplatform.com/>
- Prepared, developed and completed jointly by UK-Brazil leads
- Submitted by the UK lead



The screenshot shows the British Council's 'Going Global Partnerships' application page. The header features the British Council logo (four white circles) and the text 'BRITISH COUNCIL' in white on a dark blue background. Below the logo, there is a white box for 'Log in or register' with an email input field and a purple 'Continue' button. To the right, a green box titled 'Going Global Partnerships' contains the text 'Start here' and a numbered list of three steps: 1. Register an account, 2. Start your application (save it in-progress), and 3. Submit your application to be reviewed. At the bottom of the green box, it says 'If you have any questions about the application process, please contact the organisers by email to: [Going Global Partnerships](#)'.

# Application process

Good Grants online platform

Budget information

Key documents

- Lead partners
- EDI and Gender Statement
- All questions mandatory
- Assessment criteria

- Finance: caps

- Checklist
- All required items



# TNE Exploratory Grants 2025-26

## Grant funding:

- **High quality projects wanted**
- 1-2 UK-Brazil grants available
- **Duration:** 17 months
- **Grants:** £20k - £25k each
- 90% paid by December 2025
- 10% paid upon final report approval

## Application process:

- Applications: started and submitted by UK Lead, jointly developed
- Equitable: distribution of resources and responsibilities in the project, and benefits
- Gender and EDI Statement

# Call timeline

Stage	Dates
Call for applications opened	23 June 2025
Deadline for clarification questions sent by applicants	21 July 2025
<b>Deadline for application submission</b>	<b>8 September 2025 (23.59 BST)</b>
Results announcement	27 November 2025
Grant agreement signed	01 December 2025
Grant payments	09 January 2026
Progress report submission	6 months after project starts
Project implementation	05 January 2026 – 01 June 2027
Final narrative and finance reports	Shortly after the end of the project

For queries contact: [goingglobalpartnerships-TNE@britishcouncil.org](mailto:goingglobalpartnerships-TNE@britishcouncil.org)

# Research Environments Grants

Suruchi Singh

# About Grant

**The Research Environments (RE) project, aims to support the research and academic environment through**

1. international collaboration.
2. training programmes
3. exchange of knowledge and best practice
4. development and implementation of pilot activities

# Key details about Grant

**Grant amount:** £25,000 to £40,000

**Project length:** 12 months, starting January 2026

**Application deadline:** 9 September, 23.59 UK time

Call details are available here: [link](#)

# Eligibility

UK lead institutions must be one of the following:

- A higher education provider with degree awarding powers
- A not-for-profit research institution, establishment or organisation.

Partner country institutions must be one of the following:

- A higher education provider, as locally defined
- A not-for-profit research institutions, establishments and organisations, as locally defined.

# Application process

Good Grants online platform

Budget information

Key documents

- Lead partners
- EDI and Gender Statement
- All questions mandatory
- Assessment criteria

- Finance: caps

- Checklist
- All required items

# Good Grants Online Platform



Log in or register

Email

[Continue](#)

## Going Global Partnerships

Start here

- 1 Register an account.
- 2 Start your application (save it in-progress).
- 3 Submit your application to be reviewed.

If you have any questions about the application process, please contact the organisers by email to:  
[Going Global Partnerships](#)



# Key Milestones

Milestone	Timeline
Deadline for applications	9 September 2025, 11:59 pm UK time
Results announcement	By November 2025
Contracts signed	By end of November 2025
Period of grant payments	By mid- December 2025

For any queries, please write to:

[ResearchEnvironments@britishcouncil.org](mailto:ResearchEnvironments@britishcouncil.org)

# Q&A

# Research Environments

**Q. What might be reasonable to expect as “contributing to the economic development and social welfare of the partner country and lead to positive impact on the lives of the most vulnerable populations within a reasonable timeframe (3 to 15 years).”?**

A. We'd just want to see how the benefits were going to the vulnerable population over that time horizon. E.g. what impacts are they expecting to have, and who will benefit.

# Research Environments

**Q. We wish to develop a collaborative engagement hub between academics and non-academics to work for the graduation programme for indigenous communities in Rondônia. Are such projects acceptable under such grants?**

**A. Yes, it is possible**

## Q&A

**Q. Is there any specific requirement for applicants from institutions outside the UK?**

A. Brazilian institutions must be not-for-profit HE providers or research institutions – either public or private. Both the UK and Brazilian institutions have to provide the required documents as mentioned in the call guidelines.

**Q. Where can I see a list of partner UK universities?**

A. <https://www.ukri.org/publications/organisation-eligibility/research-organisations-eligible-for-ukri-funding/>

---

## Q&A

**Q. Can a researcher participate in more than one proposal simultaneously? Can the same group with the same lead person apply for both opportunities?**

A. Although it is possible, we recommend that each project have its own UK and Brazilian principal investigators (PIs) to ensure adequate leadership and stronger bonds within the project network.

**Q. How many collaborators could we have in the proposal?**

A. Each proposal must have, at least, one UK HEI and one Brazilian institution represented by their respective lead persons/PIs. Wider UK-Brazil consortia are encouraged.

---

## Q&A

**Q. Are there any previous selected proposals/projects available?**

A. Selected proposals are not published. You can find in our website the institutions and partnerships that were selected previous calls.

**Q. Can BCRs be the PI for the lead UK institution while being backed by senior colleagues?**

A. Yes, as long as you have the back up from the institution, it is allowed. Additionally, your contract should not finish before the end of the grant timeline.

---

# Thank you